



**SATURDAY,
NOVEMBER 30, 2013**

*Fremont, Nebraska
Christensen Field - 1:00 P.M.*



Opens • Breds • select Genetic Lots



Where Champions Are Born!

Genetic Perfection 2013 consignors:

- | | |
|--|-------------------------------------|
| Tucker Cattle Co.....(402) 314-4488 | CRR Simmentals.....(402) 672-3556 |
| B&R Simmentals.....(402) 533-0787 | Rains Simmentals.....(402) 826-1270 |
| BF Black Simmentals.....(402) 274-7454 | Schram Cattle Co.....(402) 297-5416 |
| Zeis Simmentals.....(402) 720-1967 | NP Cattle Co.....(402) 720-7476 |
| Laaker Land & Cattle.....(402) 720-4734 | P&C Farms.....(402) 505-1192 |
| Western Cattle Source.....(308) 665-1111 | |

Doug & Debbie Parke
(859) 421-6100
pleent@aol.com

www.parkelivestock.com

www.geneticperfectioncattle.com



*Rounding up our
best genetics!*

**SATURDAY,
NOVEMBER 30,
2013**



Welcome to the 2013 Genetic Perfection Sale! Once again this group of progressive breeders will be offering top shelf Simogenetics that represent a gene pool of many hundreds of cows, and top level ET and AI programs utilizing only the most popular and proven sires.

Purebred breeders, club calf producers and show prospect buyers will be pleased with the quality and depth of the offering. There is truly something for everyone.

Also, please note the entire offering can be viewed indoors, in the heated, all weather facility at Christensen Field. If you have any questions, please feel free to contact any of the consignors or sale representatives.

Thank you for your interest!
The Genetic Perfection Group

**Fremont,
Nebraska**

**Christensen Field
- 1:00 P.M.**



Starborn Feeds*
& TACK

Mark Vencil
29304 Garvin Road, Valley, NE 68064
402-359-4436



Starborn Feed can supply all of your cattle needs from complete show feed to minerals and supplements to make your livestock winners.

Delivery available in bag and bulk. Customer service is our priority!

Authorized Dealer:



Nutrena



View catalog online at: www.parkelivestock.com or
www.geneticperfectioncattle.com

SATURDAY, NOVEMBER 30, 2013

Fremont, Nebraska
Christensen Field - 1:00 P.M.
lunch served @ 12:00 noon

Sale Day Phones:

Doug Parke - 859-421-6100
402-720-1967 • 402-533-0787 • 402-314-4488

This sale will be broadcast live on the internet.

DVAuction
Broadcasting Real-Time Auctions

LOCATION:

Christensen Field, Fremont, NE
At the junction of Hwy. 77 and 23rd Street (Hwy. 30), take 23rd Street west to Airport Road, turn south on Airport Road to Linden Street, turn west and go approximately 3/4 mile and sale facility will be on the right.

SCHEDULE:

Friday, November 29th
Noon to Dusk..... Viewing of Sale Cattle
Saturday, November 30th
8:00 a.m..... Viewing of Sale Cattle
12:00 noon..... Complimentary Lunch
1:00 p.m..... Genetic Perfection Sale

TERMS & CONDITIONS:

All cattle sell under the Terms and Conditions of the American Simmental Association.

EPDs:

EPDs listed are Fall 2013 numbers. Please note EPDs may change from the time sale catalog is printed until registration papers are transferred. For updated EPDs, genetic status, plus the current ASA guidelines and sale conditions, go to www.simmental.org.

ANNOUNCEMENTS:

Announcements made sale day and from the auction block during the sale take precedence over printed material associated with this sale. Anyone attending this sale attends at their own risk. Breeders or sales force will not be held responsible for any personal injury for attending this sale.

PAYMENT:

Payment expected day of auction. If billing is necessary, payment due by Dec. 20 — any accounts not settled by the 20th will be charged interest upon second billing unless prior arrangements have been made with the individual seller (before auction day).

MOTELS:

Holiday Inn Express.....(402) 753-3850
Countryside Inn & Suites.....(402) 721-1109
Super 8.....(402) 727-4445
Sleep Inn.....(402) 721-8400

AIRPORT:

Omaha, NE is 40 miles from sale facility. Lincoln, NE is 45 miles from sale facility. Both are serviced by major airline carriers. Fremont Municipal Airport has a 5500 foot runway to accommodate light aircraft.

LIVESTOCK INSURANCE:

Insurance will be available sale day through sale management.

SALE STAFF:

Kristian Rennart.....(308) 440-9463
Tommy Carper.....(540) 336-2737
JW Brune.....(785) 865-6624
Colton Buus, ASA field rep.....(605) 214-3532

AUCTIONEER: Jered Shipman

SALE CONSULTANTS:

Doug Parke.....(859) 987-5758, (859) 421-6100 cell.
Jered Shipman.....(806) 983-7226
Buddy Robertson.....(580) 747-7000
Tim Burke.....(402) 750-0440
Jim Suver.....(402) 690-7354
Kelvin Jorgensen.....(402) 366-9475
Jon Jordan.....(765) 412-1450
Bruce Winther.....(712) 592-2099
Ron Miller.....(402) 297-6329
Bob Tiedeman.....(308) 520-0500
Jake Tiedeman.....(308) 520-0499
Ryan Johnson.....(605) 999-5576

GENETIC PERFECTION BREEDERS:

Tucker Cattle Co. - Brad Tucker.....(402) 314-4488
B&R Simmentals - Rob Vogt.....(402) 533-0787
BF Black Simmentals - Bill Fulton.....(402) 274-7454
Zeis Simmentals - Dave Zeis.....(402) 720-1967
Laaker Land & Cattle - Brian Laaker.....(402) 720-4734
Western Cattle Source - Jock Beeson.....(308) 665-1111
CRR Simmentals - Clint Robinson.....(402) 672-3556
Rains Simmentals - Cory Rains.....(402) 826-1270
Schram Cattle Co. - Martin Schram.....(402) 297-5416
Chris Schram.....(402) 297-3475
NP Cattle Co. - Nick Petersen.....(402) 720-7476
P&C Farms - Pat Gaughen.....(402) 505-1192

TRUCKING SERVICES:

Brent Williams.....(812) 453-7548
Mark Howard.....(931) 510-9147
Sam Harroun.....(319) 325-9389

View catalog online at: www.parkelivestock.com
www.geneticperfectioncattle.com or view videos online - call consignors for details!



Doug & Debbie Parke
OFFICE: (859) 987-5758
CELL: (859) 421-6100
email: pleent@aol.com
www.parkelivestock.com

Watch our website for updates on DP News.



OPENS

Lot #1

BF BLACK SIMMENTALS

BF Miss High Volt Blaze

ASA #2769010 Tattoo: A34 BW: 84

Birth Date: 1/1/13 1/2 SM 1/4 AN 1/4 CS

SS/PRS High Voltage 244X { HTP/SVF Duracell T52
Kenco Miley Cottontail

34S

EPDs
CE..... 9.8
BW..... 1.7
WW..... 60.1
YW..... 88.8
MCE..... 8.3
MM..... 23.2
MWW.. 53.3
API.... 109.4



Out of seven High Voltage heifers in the 2013 crop, we have only one with the blaze face and here she is. A really nice half blood with a wide top, big butt and good square hip. Plus, the good looks department didn't pass her by - a real eye catcher. When I purchased this one's dam from Nate Ruby he said she would be a blaze face throwing machine and he was right -- this one will be too. "BF Miss High Volt Blaze" has a touch of Maine in her background going back to the Live Bait bull - also a blaze face.



Lot #2

CRR SIMMENTALS

CRR Fostoria

ASA #2769446 Tattoo: A143 BW: 85

Birth Date: 1/5/13 1/2 SM 1/2 AN

Duff New Edition 6108 { O C C Genesis 872G
O C C Dixie Erica 814G
CRR Miss Fostoria { CNS Dream On L186
J&C CRR Miss Fostoria

EPDs
CE..... 9.1
BW..... 2.3
WW..... 60.8
YW..... 89.3
MCE..... 5.3
MM..... 16.8
MWW.. 47.2
API.... 106.8

The proven "818" cow family hits again! This 1/2 blood powerhouse female is why breeding cattle is so fun ... two 3/4 sisters to this female have been high sellers in past Genetic Perfection sales and doing an excellent job for their new owners. A143 = big bodied, big boned and footed - this sums up this powerful female. Her dam W90 is now in our donor pen having produced high quality bulls and females.

Lot #3

LAAKER LAND & CATTLE

BLL Miss Hi Reguard A123

ASA #2769852 Tattoo: A123 BW: 80

Birth Date: 1/10/13 1/2 SM 1/2 AN

Yardley High Regard W242 { Yardley Impressive T371
Miss Yardley T68

Craft Pam 544-757 { S K F Prince
M&E Pam 544

EPDs
CE..... 9.3
BW..... 0.1
WW..... 54.9
YW..... 91.3
MCE..... 6.8
MM..... 20.0
MWW.. 47.5
API.... 98.8



The High Regard bull has made a big splash as a producer of show winning females and you can see why right here. This female is super flat, angular and sharp thru her front one-third combined with a huge amount of rib shape and volume. She is large hooved and moves with flexibility. Her dam 757 has been a consistent producer of good ones including two excellent daughters in production for Mike Sweeney of IA. Also a top selling bull last year.

PLAINS Equipment & More
JOHN DEERE

Mike Mackie - 402-238-2211

Lot #4

BF BLACK SIMMENTALS

BF Miss Q Supreme Look

ASA #2743498 Tattoo: A98 BW: 76

Birth Date: 1/24/13 1/2 SM 1/2 AN

DCC New Look 101 { O C C Genesis 872G
O C C Dixie Erica 814G

Triple C Queens Supreme { CCR Ameritrade 155J
Triple C Crazy Queen L98

EPDs
CE..... 11.8
BW..... -0.6
WW..... 59.3
YW..... 87.9
MCE..... 3.1
MM..... 25.6
MWW.. 55.2
API.... 103.6



I have been a fan of the DCC New Look 101 Bull for a while and was anxious to see the results of the "Queen Supreme" mating. OH MY GOSH! This heifer has got to have some friends on sale day. Doug Satree named this one Division Champion at the Nebraska State Fair and in his remarks made five points about her - all positive. So yes, she will show and yes, she will make an impressive cow. I don't want to lose track of this one. Can't wait to see her as a bred.



Lot #5

BF BLACK SIMMENTALS

BF Ms Confidentiality

ASA #2743496 Tattoo: A817 BW: 73

Birth Date: 2/2/13 1/2 SM 1/2 AN

SVF Steel Force S701 { CNS Dream On L186
SVF Sheza Beauty L901

BF GCC 5918 { O C C Legend 616L

EPDs
CE..... 13.2
BW..... 0.1
WW..... 56.3
YW..... 84.3
MCE..... 6.3
MM..... 14.2
MWW.. 42.3
API.... 118.7

Out of our 30 show heifer prospects, this is the one that turns the most heads. She is a full sister to BF Mr. Confidence with the Nebraska State Fair, American Royal and National Western Grand Champion in his run. And now the same blood has produced "Zeis Mr. Confident," the Iowa State Fair Champion Percentage Bull. Her sister sold in Denver last year "BF Miss Confide In Me" and did quite well with her soft bodied look. Ms. Confidentiality has that same soft middle but excels in her front one-third. Her picture doesn't lie, she is a class act and we think a tremendous percentage simmental show heifer prospect.

Lot #6

TUCKER CATTLE CO.

B&R SIMMENTALS

A475

ASA #pending Tattoo: A475 BW: 84

Birth Date: 2/4/13 1/2 SM 1/2 AN

Simm/Angus genetics at their finest. Backed by the 501 donor, these half blood heifers possess the extra substance sometimes lacking in the half blood phenotype. Built solid from the ground up with a lot of belly and shape should lead to exciting days ahead.



Lot #7

TUCKER CATTLE CO.

B&R SIMMENTALS

A143

ASA #pending Tattoo: A143 BW: 81

Birth Date: 3/23/13 1/2 SM 1/2 AN

Mr NLC Upgrade U8676 { Ellingson Legacy M229
Ms NLC Mojo S6119 B

K C C Bondo Beauty 501R { S A V 5175 Bando 1024
Masterfare Sara 935

EPDs
CE..... 6.9
BW..... 1.5
WW..... 67.7
YW.... 101.6
MCE..... 8.5
MM..... 22.2
MWW.. 56.0
API.... 114.0



This sale will be broadcast live on the internet.
DVAuction
Broadcasting Real-Time Auctions



Lot #8

ZEIS SIMMENTALS

Zeis Miss Confident A293

ASA #2770312 Tattoo: A293 BW: 81
 Birth Date: 2/10/13 1/2 SM 1/2 AN

SVF Steel Force S701 { CNS Dream On L186
 SVF Sheza Beauty L901
 BF GCC 5918 { O C C Legend 616L

EPDs
 CE..... 13.2
 BW..... 0.1
 WW..... 56.3
 YW..... 84.3
 MCE..... 6.3
 MM..... 14.2
 MWW.. 42.3
 API.... 118.7

Here is a good looking, big middled full sib to the AI stud bull and KC and Denver Champion BF Mr Confidence. A full sib bull calf that we own was named Grand Champion Low Percentage Bull at the IA State Fair this summer. The quality and consistency of these genetics has been amazing. Help yourself to a really top notch brood cow prospect here.



BF Mr. Confidence - full sib



Lot #9

RAINS SIMMENTALS

Rains Lucky Blast

ASA #2776848 Tattoo: A6 BW: 82
 Birth Date: 2/21/13 1/2 SM 1/2 AN

Duff E Blast 8138 { Duff New Attraction 6110
 Duff EMB814G Dixie Erica 624
 Rains Lady Luck { GW Lucky Break 047G
 SS Miss 734 P-8

I was really impressed with a group of E-Blast calves I saw a year ago as they were very consistent and just the right kind. I knew this Angus sire would work well on Haddens "Lady Luck" baldy cow that was a past GP high seller and former Nebraska State Fair Calf Champion. Lucky Blast is unique as she expresses that trending "cowy look" while retaining an eye catching presence that the popular Zeis Maxine A231 family tree have been a staple for. This girl is super sound and possesses a kid approved attitude.



Rains Lady Luck - dam

Lot #10

RAINS SIMMENTALS

Rains Gold Rush

ASA #2776853 Tattoo: A309 BW: 73
 Birth Date: 2/24/13 1/2 SM 1/2 AN

GCC Gold Standard X615 { GCC Total Recall 806T
 O C C Juanada 925R
 BLL Miss Zeis Dream S316 { CNS Dream On L186
 Zeis Miss Ace N13

EPDs
 CE..... 15.0
 BW..... -0.6
 WW..... 53.2
 YW..... 79.3
 MCE..... 6.6
 MM..... 13.9
 MWW.. 40.5
 API.... 121.4



GCC Gold Standard X615 - Sire

An embryo calf from our Jewel Donor that has brought us a pile of "good ones." A309 is your shot to own one of the first GCC Gold Standard females to be offered at auction. Her dad is a Total Recall son that we regretfully fell short of buying, so we sampled him instead. I think you'll like what you see as calving-ease-cattle with this type of growth, stacked with the best of the OCC breeding are a golden commodity. "Goldy" is just a complete-pounder and has that wow-cow-look about her. She is stout through her rear quarter and twist and has that striking look of her grandfather with a neck that shoots high out of her front shoulder. Get in on the ground floor of this breed leading calf factory.





Lot #11
LAAKER LAND & CATTLE
BLL Miss Brilliance A823

ASA #2769853 Tattoo: A823 BW: 76
 Birth Date: 3/17/13 1/2 SM 1/2 AN

S A V Brilliance 8077 { S A V Bismarck 5682
 S A V Blackcap May 5270
 BLL Fat Butt Y431 { Flying B Cut Above
 BLL Miss Dream On T157

EPDs
 CE..... 16.2
 BW.....-0.7
 WW..... 57.9
 YW..... 91.4
 MCE..... 11.9
 MM..... 23.6
 MWW.. 52.5
 API.... 139.7

This young female combines a tremendous amount of quality with a super look and profile. She is yak haired and extremely sound structured. Sired by one of the most

popular bulls in the Angus breed, SAV Brilliance, and her dam traces back to Felt's Louisville champion female. As an added bonus this female's EPD package is impeccable with an API of 140.

Lot #12
WESTERN CATTLE SOURCE
WCS Ms Hot Tamale 353A

ASA #2745404 Tattoo: 353A BW: 83
 Birth Date: 2/21/13 5/8 SM 3/8 AN

ES Power Up XS37 { Mr NLC Upgrade U8676
 ESS37
 WCS Ms Shot 689S { WCS Mr Hot Shot 4008P
 Molitor 381 Annie L329947

EPDs
 CE..... 6.4
 BW..... 3.5
 WW..... 75.1
 YW.... 107.3
 MCE..... 9.3
 MM..... 19.3
 MWW.. 56.9
 API.... 103.5



This is one of our first calves by Power Up and WOW are they good! I dare you to find a heifer with this much depth and shape of rib, muscle, and femininity in one package. She will show and then make one outstanding cow. Her half sister sold to Doug Jensen and she weaned an 845 lb. bull calf as a first calf heifer. It is hard to let go of this one. Her mother seems to never miss. Ms Hot Tamale exemplifies easy doing and structural correctness. Buy with total confidence.



Lot #13
WESTERN CATTLE SOURCE
WCS Ms Power Up 3106A

ASA #2745390 Tattoo: 3106A BW: 78
 Birth Date: 3/6/13 5/8 SM 3/8 AN

ES Power Up XS37 { Mr NLC Upgrade U8676
 ESS37
 WCS Ms 036X { TC Grid Topper 6116
 MV Miss MT 102L

EPDs
 CE..... 8.2
 BW..... 2.3
 WW..... 72.6
 YW.... 108.6
 MCE..... 9.8
 MM..... 25.6
 MWW.. 61.9
 API.... 111.2

These Power Up females are just flat good. We sold her half sister last year to Stan and Nancy Thayer. They say she is one of the best looking breeds they have. 3106A is

just like big sister. What a cow family here. Her first two calves have made the cut for this sale. This heifer is smooth shouldered, feminine fronted with loads of depth and shape of rib combined with outstanding structural correctness. This is the kind of female that makes money.

Lot #14
WESTERN CATTLE SOURCE
WCS Ms Power Up 3018A

ASA #2745562 Tattoo: 3018A BW: 82
 Birth Date: 3/7/13 5/8 SM 3/8 AN

ES Power Up XS37 { Mr NLC Upgrade U8676
 ESS37
 WCS Ms Cheyenne 973W { TC Broadside 781
 WCS Ms Austin 282M

EPDs
 CE..... 7.1
 BW..... 3.0
 WW..... 78.9
 YW.... 116.0
 MCE..... 9.8
 MM..... 22.3
 MWW.. 61.8
 API.... 108.3



What a fancy feminine heifer. 3018A just has that look about her. She always catches your eye when you walk into the pen. Her mom goes back to the cow family that produced the Wisconsin Supreme Champion Heifer for Bolan and Goehring. What a top notch show prospect here.



Lot #15
ZEIS SIMMENTALS
LAAKER LAND & CATTLE
Zeis BLL Lucky Gal A403

ASA #2770318 Tattoo: A403 BW: 81
 Birth Date: 1/6/13 3/4 SM 1/4 AN

SVF Steel Force S701 { CNS Dream On L186
 SVF Sheza Beauty L901
 GCF Miss Lucky Gal N42 { GW Lucky One 686K
 4

EPDs
 CE..... 11.1
 BW..... 1.8
 WW..... 59.2
 YW..... 86.9
 MCE..... 10.8
 MM..... 17.8
 MWW.. 47.4
 API..... 128.2

The N42 cow has earned a reputation for producing big volumed, good looking cattle with excellent structural soundness that can compete on the national level in the show ring. Her mating to Steel Force was a huge success with the exception of it resulting in mostly bulls and only two heifers. The best one is offered here for your appraisal. We are committed to offering our very best in the GP or this one would never leave the farm. She expresses the volume and fleshing ability we all desire and she is big footed and agile on the move. A right sized female with unlimited earning potential. Retaining one flush, minimum six freezable embryos at buyer's convenience and seller's expense.



Many time Champion for Phelps/Scheiderer and maternal sib to Lot 15



Many time Champion for Phelps/Scheiderer/Lazy H and maternal sib to Lot 15



Lot #16
NP CATTLE CO.
NPC Miss Zel A309

ASA #2774619 Tattoo: A309 BW: 78
 Birth Date: 1/6/13 3/4 SM 1/4 AN

SS Mr Callaway { PVF-BF BF26 Black Joker
 Zeis Miss Jesse G177
 Zeis Miss Zel Y411 { Duff New Edition 6108
 Zeis Star Power W539

EPDs
 CE..... 4.2
 BW..... 2.5
 WW..... 55.5
 YW..... 79.1
 MCE..... 2.6
 MM..... 18.0
 MWW.. 45.7
 API..... 78.2

I purchased A309's mother off of the GP sale last year. She goes back to the great Zel cow family of Dave's. This heifer has a cool front third, is deep bodied, and

moves like a cat. She should make a great cow after her show career.

Lot #17
BF BLACK SIMMENTALS
BF Queen Confidence

ASA #2743494 Tattoo: A645 BW: 69
 Birth Date: 1/12/13 3/4 SM 1/4 AN

BF Mr Confidence { SVF Steel Force S701
 BF GCC 5918
 Triple C Queens Supreme { CCR Ameritrade 155J
 Triple C Crazy Queen L98

EPDs
 CE..... 10.7
 BW..... 0.9
 WW..... 60.5
 YW..... 87.4
 MCE..... 5.3
 MM..... 22.5
 MWW.. 52.8
 API..... 102.8



We are keeping bulls and heifers out of this mating and there are some stout ones.

This particular Mr. Confidence female out of the Queen Supreme has that look. I just couldn't pass her up so we broke her and hope she gets a chance to be shown. She has the potential to be a real good one down the road.

View videos online - call consignors for details!



Lot #18
CRR SIMMENTALS
CRR Wide Track

ASA #2769448 Tattoo: A783 BW: 80
 Birth Date: 1/20/13 3/4 SM 1/4 AN

W/C Wide Track 694Y { 3C W/C Right Track W9462
 Miss Werning 694S
 CRR Miss Nikki { Zeis Mo Better U48
 4012

EPDs
 CE..... 8.2
 BW..... 0.7
 WW..... 61.0
 YW..... 91.2
 MCE..... 6.3
 MM..... 19.0
 MWW.. 49.5
 API.... 110.8

This 3/4 blood female has had many admirers throughout the summer and fall. A783 is unique in many ways having no Legacy in her pedigree ensures the genetic

potency of this outcross female. W/C Wide Track was the high selling outcross bull for the Werning Cattle Co. in South Dakota. This rocket necked, great back legged, big footed and big swooping rib shaped female will sure hit you hard when you see her. Her dam's sire, Zeis Mobetter, goes back to Jon Jordan's many time champion donor "Jewel." This female will sure be fun this winter and next summer for her new owner - bid with confidence.

Lot #19
TUCKER CATTLE CO.
B&R SIMMENTALS

BT Miss Dream A54

ASA #2775900 Tattoo: A54 BW: 85
 Birth Date: 2/2/13 3/4 SM 1/4 AN



Lot #20
TUCKER CATTLE CO.
B&R SIMMENTALS

BT Miss Dream A125

ASA #2775899 Tattoo: A125 BW: 82
 Birth Date: 2/12/13 3/4 SM 1/4 AN

Wagr Dream Catcher 03R { CNS Dream On L186
 3C Melody M668 BZ
 BS Miss 8161P { 3C Boomer K189 B-W
 8161

EPDs
 CE..... 9.1
 BW..... 2.1
 WW..... 58.9
 YW..... 77.0
 MCE..... 9.8
 MM..... 23.8
 MWW.. 53.2
 API.... 121.0



These two sisters are exceeding the precedence their sisters set 2 years ago at the Genetic Perfection sale. With their overall balance, style and awesome attitudes I am glad it's not me having to make the decision between the two on sale day.



Lot #21
ZEIS SIMMENTALS
Zeis Miss Excal A533

ASA #2770313 Tattoo: A533 BW: 81
 Birth Date: 2/7/13 3/4 SM 1/4 AN

Ruby NFF Excalibur 002X { LBS The Foreman 702T
 Rhythm 418P
 Zeis Macho U88 { 3C Macho M450 BZ
 6851

EPDs
 CE..... 2.7
 BW..... 2.9
 WW..... 61.6
 YW..... 92.0
 MCE..... 4.0
 MM..... 19.4
 MWW.. 50.2
 API.... 70.5

Here is a 3/4 baldy female that will catch your eye every time. She is moderate framed and about as complete as you can make one. The Angus component in her pedigree is an EXT x Bando 155 from Connealy's that we flushed to Meyer and Macho. No Dream On or Legacy here for mating flexibility.



Lot #22
CRR SIMMENTALS
CRR Belle

ASA #2769451 Tattoo: A573 BW: 79
 Birth Date: 2/14/13 3/4 SM 1/4 AN

SVF Steel Force S701 { CNS Dream On L186
 SVF Sheza Beauty L901
 KS-HM Miss Belle 264T { S A V 8180 Traveler 004
 BH Miss Belle 672F

EPDs
 CE..... 10.7
 BW..... 0.8
 WW..... 66.4
 YW.... 100.3
 MCE.... 10.3
 MM..... 25.1
 MWW... 58.3
 API.... 117.6

3/4 blood striped faced female that combines a lot of good things - she's long necked, big hipped, big boned and good haired. We added her mother to the donor pen after she continued to produce show ring styled, real world cattle every year ... bid with confidence!

Lot #23
TUCKER CATTLE CO.
B&R SIMMENTALS
BT Miss Beauty A245
 ASA #2775904 Tattoo: A245 BW: 86
 Birth Date: 2/14/13 3/4 SM 1/4 AN

EPDs
 CE..... 8.6
 BW..... 2.1
 WW..... 63.2
 YW..... 93.4
 MCE..... 9.6
 MM..... 24.1
 MWW... 55.8
 API.... 112.5



Lot #24
TUCKER CATTLE CO.
B&R SIMMENTALS
BT Miss Beauty A158
 ASA #2775903 Tattoo: A158 BW: 79
 Birth Date: 2/20/13 3/4 SM 1/4 AN

SS/PRS High Voltage 244X { HTP/SVF Duracell T52
 Kenco Miley Cottontail
 BT Miss Macho U53 { 3C Macho M450 BZ
 B/R Magnet 7111

The longer we work with these High Voltage daughters they keep getting better and better. Good necked, smooth fronted along with a tremendous amount of center rib and stoutness of hip are the essentials for making an exciting future for these two High Voltage daughters.



High Voltage



Lot #25
WESTERN CATTLE SOURCE
WCS Ms Sensational 365A

ASA #2745423 Tattoo: 365A BW: 83
 Birth Date: 2/22/13 3/4 SM 1/4 AN

Mr NLC Upgrade U8676 { Ellingson Legacy M229
 Ms NLC Mojo S6119 B
 WCS Ms Blackfoot 796T { WCS Mr Half 245M
 High Ridge Ms Blackfoot H414

EPDs
 CE..... 7.6
 BW..... 2.7
 WW..... 68.4
 YW..... 96.2
 MCE.... 12.8
 MM..... 24.2
 MWW... 58.4
 API.... 115.7

I don't know where you will find a heifer with this kind of volume, broodiness and femininity. 365A is one of a kind. Super feminine thru her front end combined with extreme depth and shape of rib. Along with this, she is thick and wide from behind. To top it off she moves like a cat. When you get done admiring her phenotype you will notice she has an excellent set of EPD's and outcross genetics. I can't say enough good about her! WCS will reserve right to 1 flush after she's calved - minimum of 6 eggs at buyer's convenience, seller's expense.



Lot #26

ZEIS SIMMENTALS

Zeis Sioux Miss A943

ASA #2770315 Tattoo: A943 BW: 76
 Birth Date: 2/12/13 3/4 SM 3/16 AN 1/16 MA

SS Mr Callaway { PVF-BF BF26 Black Joker
 Zeis Miss Jesse G177
 GCC Sioux Steel 263X { SVF Steel Force S701
 GCC Sioux Miss 16/65

EPDs
 CE..... 5.4
 BW..... 1.1
 WW..... 52.3
 YW..... 71.3
 MCE..... 4.5
 MM..... 16.6
 MWW.. 42.7
 API..... 99.4

A 3/4 Callaway daughter that is high volume and heavy structured. We purchased her Steel Force x Irish Whiskey dam from Griswald Cattle Co. because we loved her

soft look, volume and udder quality. A little different twist for us pedigree wise, but a high quality female none the less. Backed by generations of maternal excellence.

Lot #27

TUCKER CATTLE CO.

B&R SIMMENTALS

BT Miss Calypso A53

ASA #2775901 Tattoo: A53 BW: 81
 Birth Date: 3/12/13 3/4 SM 1/4 AN

Mr HOC Broker { SVF Steel Force S701
 JM BF H25
 BT Miss Meyer U440 { Meyer Ranch 734
 Vermillion Erica 8906

EPDs
 CE..... 3.3
 BW..... 2.9
 WW..... 58.4
 YW..... 88.8
 MCE..... 7.8
 MM..... 17.4
 MWW.. 46.5
 API..... 99.0



Certainly not her last picture to be taken! I am sure there are many backdrops waiting to be graced by this one. Mesmerizing in her overall complete make up this little baldy will have you feeling excited about being a part of the Simmental breed or leave you wanting to be a part of it. Parents/showmen who are on a quest for a top quality show heifer with an outstanding attitude will be satisfied with this one.



Lot #28

TUCKER CATTLE CO.

B&R SIMMENTALS

BT Miss Calypso A176

ASA #2775905 Tattoo: A176 BW: 88
 Birth Date: 3/20/13 3/4 SM 1/4 AN

BMR Explorer { Westfall Voyager 721P
 WW Miss My Dream 429R
 BT Miss Meyer U440 { Meyer Ranch 734
 Vermillion Erica 8906

EPDs
 CE..... 3.9
 BW..... 1.2
 WW..... 47.8
 YW..... 63.3
 MCE..... 7.2
 MM..... 18.2
 MWW.. 42.1
 API..... 91.3

An extremely eye appealing package exquisitely balanced from end to end. Her long smooth front will seal the deal for making your short list. This one will compete against a lot of them for the purple. A176 is loaded with maternal power.

Lot #29

ZEIS SIMMENTALS

Zeis Lucky Gal A1003

ASA #2770317 Tattoo: A1003 BW: 75
 Birth Date: 4/2/13 3/4 SM 1/4 AN

SS Mr Callaway { PVF-BF BF26 Black Joker
 Zeis Miss Jesse G177
 GCF Miss Lucky Gal N42 { GW Lucky One 686K
 4

EPDs
 CE..... 5.7
 BW..... 2.6
 WW..... 49.3
 YW..... 65.4
 MCE..... 6.9
 MM..... 21.0
 MWW.. 45.6
 API.... 100.6



A Callaway out of the N42 donor cow that came in late and a little green but is coming on every day. Big square hip and a deadly killer look. Meyer and Legacy free will afford a lot of mating options. A young April female with a big future.



Lot #30
TUCKER CATTLE CO.
B&R SIMMENTALS
BT Black Velvet A191

ASA #2775902 Tattoo: A191 BW: 89
 Birth Date: 1/7/13 PB SM

Mr NLC Upgrade U8676 { Ellingson Legacy M229
 Ms NLC Mojo S6119 B
 JSF Black Velvet { PVF-BF BF26 Black Joker
 JSF Red Rose

EPDs
 CE..... 6.9
 BW..... 1.7
 WW..... 63.5
 YW..... 91.4
 MCE..... 11.5
 MM..... 25.7
 MWW... 57.5
 API.... 116.6

The 191 donor recently joined the line up of donors and this sale will be the first of her ET calves to be offered for sale. A191 has the overall completeness and shape one likes to see in an open heifer with a bright future in front of her. Certain to be a very high performing female it looks like A191 has the makings to end up being a superior producer. To share in the success, we are offering up 3 full sib embryos. Guaranteeing one pregnancy when work is completed by a certified embryologist. Embryos are stored at Preferred Genetics in Columbus, NE.



EMBRYO LOT

Lot #31
TUCKER CATTLE CO.
B&R SIMMENTALS

Mr NLC Upgrade U8676
 x
JSF Black Velvet

3 full sib embryos to Lot 30. Guaranteeing 1 pregnancy provided work is done by a certified embryologist. Embryos are stored at Preferred Genetics in Columbus, NE.

Lot #32
ZEIS SIMMENTALS
LAAKER LAND & CATTLE
Zeis Jewel A233

ASA #2770314 Tattoo: A233 BW: 82
 Birth Date: 1/09/13 PB SM

W/C Wide Track 694Y { 3C W/C Right Track W9462
 Miss Werning 694S
 Zeis BLL Jewel W339 { SVF/NJC Mo Town M216
 BLL Miss Zeis Dream S276

EPDs
 CE..... 8.6
 BW..... 2.0
 WW..... 66.9
 YW..... 98.6
 MCE..... 9.7
 MM..... 18.3
 MWW... 51.7
 API.... 124.6



We have been really pleased with our first crop of Wide Tracks and I am offering up our best purebred daughter for your appraisal. This one combines a huge amount of body mass and power in a softer, smoother package. Her dam traces back to the Denver Champion 'Jewel' that Jon Jordan of IN campaigned so successfully. This is one I would love to retain in the herd for her overall quality, balance and cow family.



Lot #33
ZEIS SIMMENTALS
Zeis Big Thing A173

ASA #2775972 Tattoo: A173 BW: 88
 Birth Date: 1/14/13 PB SM

Felt Next Big Thing 54T { GW Lucky Break 047G
 Zeis Miss Jesse G177
 BF Miss Libby Baby { BF Magnum Force T77
 BF Ms New Look 127U

EPDs
 CE..... 7.5
 BW..... 1.6
 WW..... 57.6
 YW..... 81.3
 MCE..... 7.8
 MM..... 16.7
 MWW... 45.5
 API.... 101.9

A powerful and complete purebred female that carries a lot of internal dimension and style. We purchased her 2-year-old dam from Bill Fulton and she did a heck of a job first time out the gate as you can see. Dam traces back to the Zeis Miss Drive N423 donor cow that did so well for Bill Fulton and later Pine Ridge. Lots of maternal cow power here.



Lot #34

RAINS SIMMENTALS

Rains Right To Love A106

ASA #2776845 Tattoo: A106 BW: 86
 Birth Date: 1/29/13 PB SM

HTP/SVF Duracell T52 { CNS Dream On L186
 HTP SVF Honeydew
 RP/MP Right To Love 015U { SVF/NJC Built Right N48
 PCC Queens Valentine R9

EPDs
 CE..... 12.3
 BW..... 0.8
 WW..... 61.3
 YW..... 90.4
 MCE..... 10.1
 MM..... 22.6
 MWW... 53.3
 API.... 114.9

Start with full sibs that have claimed banners at the NAILE,

Sweepstakes, and Eastern Regionals and sprinkle in a \$25,000.00 mother and \$125,00.00 valued grandmother and you got a white-star-headed, purebred-whale in this Duracell daughter. Her mother "RP/MP Right To Love" is the past Kansas City Royal Champion and is now owned by

Hudson Pine Farms, serving as a lead donor in their operation. A109 has the phenotype to follow suit and compete as her sibs have done...she displays a flat shoulder, huge hip and has much more shape and base width than most other Built Right influenced cattle. If you can't afford her sib down-south in mid-November, help yourself to a great opportunity to get in on a proven commodity right here in the Mid west on Thanksgiving weekend. Reserving the right to negotiate a future flush.



RP/MP Right To Love 015U - Dam



HPF Right To Love Z338 - Full Sib



Lot #35

ZEIS SIMMENTALS

Zeis Big Thing A723

ASA #2770306 Tattoo: A723 BW: 82
 Birth Date: 2/05/13 PB SM

Felt Next Big Thing 54T { GW Lucky Break 047G
 Zeis Miss Jesse G177
 Lang Texas Star { 3C Macho M450 BZ
 BS Miss Blackman 2170R

EPDs
 CE..... 4.1
 BW..... 2.6
 WW..... 56.1
 YW..... 76.1
 MCE..... 10.3
 MM..... 17.1
 MWW.. 45.2
 API..... 91.4

A big ribbed, super well balanced purebred female that has looked good all summer and keeps getting better with time. Her Dream On and Legacy free pedigree allows

for a lot of mating options. Her young Macho dam has been a consistent producer of good ones.

Lot #36

ZEIS SIMMENTALS

Zeis Elizabeth A493

ASA #2770309 Tattoo: A493 BW: 85
 Birth Date: 2/12/13 PB SM

SS Mr Callaway { PVF-BF BF26 Black Joker
 Zeis Miss Jesse G177
 CRR Elizabeth T828 { 3C Macho M450 BZ
 CRR Miss Justine

EPDs
 CE..... 1.2
 BW..... 2.5
 WW..... 52.9
 YW..... 69.0
 MCE..... 7.2
 MM..... 20.7
 MWW.. 47.2
 API..... 90.5



A493 is the kind of sleek fronted, flat shouldered purebred female that

Callaway is known to produce. Good haired and moderate framed, she should excel in purebred or SimAngus production. Lots of mating possibilities here. Her dam is in our donor pen and has already produced several champions and high sellers for us.



Maternal sib to Lot 36



Lot #37
TUCKER CATTLE CO.
B&R SIMMENTALS
BT Black Velvet A424

ASA #2775898 Tattoo: A424 BW: 80
 Birth Date: 2/15/13 PB SM



Lot #38
TUCKER CATTLE CO.
B&R SIMMENTALS
BT Black Velvet A3

ASA #2775896 Tattoo: A3 BW: 87
 Birth Date: 3/16/13 PB SM



Lot #39
TUCKER CATTLE CO.
B&R SIMMENTALS
BT Black Velvet A65

ASA #2775897 Tattoo: A65 BW: 81
 Birth Date: 3/2/13 PB SM

SS/PRS High Voltage 244X { HTP/SVF Duracell T52
 Kenco Miley Cottontail
 JSF Black Velvet { PVF-BF BF26 Black Joker
 JSF Red Rose

EPDs
 CE..... 9.6
 BW..... 1.1
 WW..... 52.6
 YW..... 75.2
 MCE..... 8.6
 MM..... 24.0
 MWW.. 50.3
 API.... 111.7

High Voltage was selected to be used to incorporate the leading calving ease genetics of the Simmental breed. Blending the ever popular Miley Cottontail (now in the Sloup donor battery) and Duracell (the high selling senior sire at the 2012 National Western to the Wulf family of MN) with the 191 donor was an easy solution to come up with. This trio of Voltage daughters are certainly backed by the right genetics, but more importantly their respective phenotypes match what you would expect as a result of this kind of a mating. Big volumed, easy doing with flex and softness of structure is what these three are about. Without a doubt, some of the finest PB High Voltage daughters to be offered for sale this fall.

Lot #40
RAINS SIMMENTALS
Rains Gun Smoke

ASA #2776843 Tattoo: A99 BW: 76
 Birth Date: 2/22/13 PB SM

SS/PRS Gunslinger 824X { STF Shocking Dream SJ14
 Kenco Miley Cottontail
 Gonsior Tara T30 { GS Mr Trend G94
 BBB Miss Zeus 107F

EPDs
 CE..... 10.7
 BW..... 0.8
 WW..... 59.3
 YW..... 79.3
 MCE..... 8.6
 MM..... 21.3
 MWW.. 50.9
 API.... 100.6



No, she's not a Monopoly. Gun Smoke is a really special front runner for the purebred division with a proven winning pedigree. This big bootied, long necked, standout, combines the popular Miley Cotton Tail on top and the Tara dam on bottom that produced the numerous time Champion from our Cal-laway sire for the Harker family. Her recipe to success starts on the ground, A99 can really get out and go, she has a set and cushion to her wheels that is a hard find. She combines the above with an awesome functional-look and superb hair that helps to make her one of the best highs we have mated to date. Reserving the right to negotiate a future flush.



SS/PRS Gunslinger 824X - Sire



Maternal Sib



Lot #41
TUCKER CATTLE CO.
B&R SIMMENTALS
BT Red Velvet A440
 ASA #2775894 Tattoo: A440 BW: 85
 Birth Date: 3/1/13 PB SM



Lot #42
TUCKER CATTLE CO.
B&R SIMMENTALS
BT Red Velvet A216
 ASA #2775895 Tattoo: A440 BW: 88
 Birth Date: 1/5/13 PB SM

Mr HOC Broker { SVF Steel Force S701
 JM BF H25
 JSF Black Velvet { PVF-BF BF26 Black Joker
 JSF Red Rose

EPDs
 CE..... 6.2
 BW..... 2.7
 WW..... 54.9
 YW..... 81.8
 MCE..... 9.3
 MM..... 22.6
 MWW.. 50.1
 API.... 105.5

Out of the Triple Crown winner, Mr. HOC Broker, these red ladies are uniquely different than many others that have come before them. Huge centered with the overall mass and substance to garner your attention. Their dam is just getting started and there will certainly be more heard about her as the cow family continues to build.

Lot #43
WESTERN CATTLE SOURCE
WCS Ms Frost 313A

ASA #2745480 Tattoo: 313A BW: 83
 Birth Date: 3/2/13 PB SM

Mr NLC Upgrade U8676 { Ellingson Legacy M229
 Ms NLC Mojo S6119 B
 WCS Mr Figure 854U { KS WCS Figure This M11
 WCS Ms Frosty 547R

EPDs
 CE..... 7.9
 BW..... 2.1
 WW..... 73.2
 YW..... 100.7
 MCE.... 12.1
 MM..... 24.3
 MWW.. 60.9
 API.... 113.5



This purebred heifer can go big time. She will stand a lot of competition and do a lot of winning. It is hard to find a purebred with this kind of femininity, depth and length of body. She is long, level and square in her hip design. Ms Frost is long and easy in her stride. Tremendous female here. Her mom, grandmother and great-grandmother have all been great cows for us.



Lot #44
RAINS SIMMENTALS
Rains Callaways Bonus

ASA #2776847 Tattoo: A7 BW: 79
 Birth Date: 3/7/13 PB SM

SS Mr Callaway { PVF-BF BF26 Black Joker
 Zeis Miss Jesse G177

Wurtz Lit All Up S618 { Meyers Bonus
 Wurtzs All Lit Up JH



"Sierra" Callaway Daughter

This stylish, well put together purebred is result of a planned get of sexed Callaway juice with a broody and powerful K2-Bonus cow.

The Callaway offerings have been a hot commodity, proving to be super popular when offered to the public...topping sales and show-rings alike while paying good dividends along the way. This girl is not just another average outcross, she has the goods needed to make a big splash for any program. Her foot-size, set of pastern, smooth tail-head, extended neck and awesome hair will make her a standout package.

EPDs
 CE..... 2.5
 BW..... 3.5
 WW..... 49.8
 YW..... 68.6
 MCE..... 5.5
 MM..... 21.0
 MWW.. 45.9
 API.... 89.5



Lot #45

RAINS SIMMENTALS

Rains Guns N Ammo

ASA #2776846 Tattoo: A58 BW: 68
Birth Date: 3/16/13 PB SM

SS/PRS Gunslinger 824X { STF Shocking Dream SJ14
Kenco Miley Cottontail
Gonsior Yikes Y10 { BCLR Ammo W513-1
Gonsior/AS Mystic Path

EPDs
CE..... 11.6
BW..... 1.0
WW..... 69.5
YW.... 100.6
MCE..... 6.6
MM..... 15.8
MWW... 50.5
API..... 128.1

Here's a true big-time, purebred-baldy,
from a gorgeous first calf Ammo mamma

that brings along the Miley Cotton Tail family to boot. One of my favorites from day one, she's got the bag full of goodies to be a winner combining calving ease, superb numbers, and stunning visual quality. With our Gunslinger calves looking really solid we wasted no time mating up full sibs when the bell rang this spring. Her goosey front ties into a big barreled middle and finishes out with a ton of power on the rear. Her hair is yak and her foot is big, this game changing specimen knows she has the stuff as she cocks off constantly and makes you stare. Don't get caught just looking. Reserving the right to negotiate a future flush.



SS/PRS Gunslinger 824X - Sire

Lot #46

RAINS SIMMENTALS

Rains Heated Love A95

ASA #2776855 Tattoo: A95 BW: 84
Birth Date: 3/4/13

3/8 SM 7/16 AN 1/16 MA 1/16 SS (+)

Monopoly { Heat Wave
WT F Ruth Medina

RP/MP Right To Love 015U { SVF/NJC Built Right N48
PCC Queens Valentine R9

EPDs

CE..... 5.4
BW..... 2.8
WW.... 49.4
YW.... 76.2
MCE.... -1.9
MM..... 17.0
MWW.. 41.7
API..... 75.3



Maternal sib sells as lot 34. Here's one that's a little different twist, she is white headed, snipped nosed and bred to the gills. This stout, classy, big middle, % simmy's mother is "RP/MP Right to Love" and her sire is the hottest Club-Calf sire going in Monopoly. Add some predictability to your show string and cow herd and raise your own steers or sell your own percentage heifers from this rig. My daughter is madder than a hornet that we're selling this one -- I told her maybe someday we can buy some eggs from the new owner.



RP/MP Right To Love 015U - Dam



HPF Right To Love Z338 - Maternal Sib



Lot #47

TUCKER CATTLE CO.

B&R SIMMENTALS

commercial open

Tattoo: A101 BW: 90
Birth Date: 2/5/13

Grizzly { B&D 700M
203/39P

GSBF Annies Girl 101N { CMAC Hard Core
RSCC Miss Kadabra 101N

A nicely built Grizzly daughter who is blessed with an abundance of rib shape, eye appeal, and stoutness of hip on a very solid foundation. Being a quarter blood, this heifer has a lot of breeding options for the new owner.



Lot #48

TUCKER CATTLE CO.

B&R SIMMENTALS

TCC Miss Beauty A20

AAA# 17630938 Tattoo: A20 BW: 84

Birth Date: 3/20/13 PB AN

Gamble's Hot Rod { Famous 7001
Champion Hill Lady 703

K C C Bondo Beauty 501R { S A V 5175 Bando 1024
Masterfare Sara 935

EPDs
CED -2
BW 4.6
WW 43
YW 76
Milk 16
MW 34.0
\$B 47.27

Every year we put in a top Angus lot and this year is certainly no exception. A20 received 501's trademark stamp with her overall femininity, rib shape, performance and ability to cover the ground with a fluidness and flexibility. Last year's maternal sister left the GP sale to compete a week later at the highly competitive Hoosier Beef Expo where she was crowned Res. Champion. We think just as highly of this heifer as we did her maternal sister a year ago.



EMBRYO LOT

S A V Bismarck 5682

Lot #49

x

TUCKER CATTLE CO.
B&R SIMMENTALS

K C C Bondo Beauty 501R

An opportunity to share in the power of the genetics from the 501 donor. 501 has been and continues to be a cornerstone of the donor battery. The Bismarck mating worked so well we went back and did a flush this way and wanted to open up the door of opportunity. The success story of last years Bismarck x 501 daughter is very impressive with a long list of accomplishments. Buying the embryos is the easy part deciding what you will do with the progeny will be the fun challenging part! Embryos are stored at Preferred Genetics in Columbus, NE.

Selling 3 embryos, guaranteeing 1 pregnancy when work is completed by a certified embryologist.



TCC Beauty Z75 - 2012 Genetic Perfection Lot 46
S A V Bismarck 5682 x K C C Bondo Beauty 501R
Material Sib to Lot 48 & 49



TCC Beauty Z75 - 2012 Genetic Perfection Lot 46
S A V Bismarck 5682 x K C C Bondo Beauty 501R

- Division Champion Indiana Beef Congress 2012
- Reserve Grand Champion Angus Heifer 2012 Beef Congress
 - Second In Class - Denver Stock Show 2013
- Division Champion Indiana Open Preview Show 2013
 - Reserve Grand Female State Preview Show 2013
 - Second In Class - Angus Junior Nationals
- Division Champion State Fair 4-H Show
- Grand Champion Angus Female - Indiana State Fair Open Show



EMBRYOS

Lot #50
P&C FARMS

SS Mr Callaway ASA# 2282821
x
Zeis Lookout X610 ASA# 2559760



Zeis Lookout X610
2010 Genetic Perfection Sale

Selling 3 embryos-Guarantee 1 pregnancy if work is performed by a certified embryologist.

These embryos would be full sibs to last year's high selling female, selling to Brady Janssen of IA.

Flush was bred with 2 units 5ml heifer sexed SS Mr Callaway and backed up with one unit SS Mr Callaway conventional.

Embryos are stored at Preferred Genetics, Columbus, NE



Zeis PCGF Perfection
2012 Genetic Perfection Sale

EPDs
CE..... 5.4
BW..... 2.8
WW..... 55.0
YW..... 77.0
MCE..... 5.6
MM..... 19.5
MWW.. 47.2
API..... 94.0

WashCo Feed & Supply

Blair, Nebraska



Northwest Feed & Grain

Omaha, Nebraska

402-426-2620



BREDS

Lot #51

SCHRAM CATTLE CO.

Schram Savvy Z28

ASA #2775420 Tattoo: Z28 BW: 78

Birth Date: 2/23/12 1/4 SM 3/4 AN

SP The Answer 813 { S A V Final Answer 0035
S A Eline Design 648
Schram Savvy 22X { SVF Star Power S802
WB Savvy's Sephora 725



No bull/pasture exposure!

EPDs	Mating EPDs
CE..... 12.4	CE.....10.35
BW.....-0.1	BW.....1.30
WW..... 64.6	WW.....69.05
YW..... 102.1	YW.....108.65
MCE..... 7.9	MCE.....8.65
MM..... 20.3	MM.....20.95
MWW.. 52.6	MWW.....55.50
API.... 129.2	API.....119.0



#51

Low percentage female with explosive rib shape and depth of body, broody with enough style to raise a great one!
Bred to W/C Widetrack 694Y on 5/13/13.



#52

Lot #52

P&C FARMS

PCGF Foundation

ASA #2776439 Tattoo: Z247 BW: 82

Birth Date: 3/13/12 1/4 SM 3/4 AN

JF Foundation 8010U { WSJ Encore
Triple C Empress N3063L

O141

EPDs
CE..... 9.2
BW..... 1.3
WW..... 51.9
YW..... 86.5
MCE..... 4.8
MM..... 16.5
MWW.. 42.5
API.... 113.4

Here is a really cool looking 1/4 blood JF Foundation daughter that would work well to make 1/2 blood Simmis. Her Dam is a registered Angus sired by SAV Final Answer and she will be foundationed into this females pedigree by sale time. As we walk thru the bred pen this one always comes to the top. AI bred 4-2 to Welsh's Dew It Right.

Lot #53

ZEIS SIMMENTALS

LAAKER LAND & CATTLE

Zeis BLL Juanda Z82

ASA #2770961 Tattoo: Z82 BW: 70

Birth Date: 1/2/12 1/2 SM 1/2 AN

3C Macho M450 BZ { Meyer Ranch 734
3C Crocus H112 B
G C F Miss Juanda R214 { TC Freedom 104
MAF Juanada Maid 0111

EPDs
CE..... 4.7
BW..... 1.9
WW..... 59.3
YW..... 89.5
MCE..... 9.6
MM..... 21.4
MWW.. 51.1
API.... 90.7



#53

Z82 is a product of our time tested mating of Macho and R214. We have more than a few full sibs to this female in our herd and we love them. They are some of our best looking cows and are all great calf raisers. The mating to Uno Mas should really click on these Macho daughters. AI bred 4-1 to WLE Uno Mas.



Lot #54
LAAKER LAND & CATTLE
BLL Zeis Juanda Z162

ASA #2771855 Tattoo: Z162 BW: 85
 Birth Date: 1/3/12 1/2 SM 1/2 AN

TJ Sharper Image 809U { Dikemans Sure Bet
 T J Miss Bando S27
 BLL Zeis Miss Burn Up { JS Burning UP 33R
 G C F Miss Juanda R214

EPDs
 CE..... 5.7
 BW..... 3.3
 WW..... 76.1
 YW..... 120.7
 MCE..... 9.0
 MM..... 21.7
 MWW.. 59.8
 API.... 101.9

This female hails from our prolific Juanda R214 cow family and I love her volume combined with her sharp front one-third. The Sharper Image bull is making easy to sell high performance sons and maternal looking high volume daughters. AI bred 4-4-13 to WS A Step Up.



WS A Step Up

Lot #55
ZEIS SIMMENTALS
Zeis Miss Zel Z532

ASA #2770962 Tattoo: Z532 BW: 75
 Birth Date: 1/20/12 1/2 SM 1/2 AN

Duff New Edition 6108 { O C C Genesis 872G
 O C C Dixie Erica 814G
 Zeis Miss Zel U368 { JDJ Intimidator 080K
 Zeis Miss Raven D74

EPDs
 CE..... 6.4
 BW..... 3.0
 WW..... 58.7
 YW..... 88.3
 MCE..... 0.7
 MM..... 20.6
 MWW.. 50.0
 API..... 83.6

The New Edition sired SimAngus females have been impressive as brood cows. Extra volume, power and fleshing ability is their trademark. This one has our most prolific and successful cow family up close in her pedigree. AI bred 4-28 to WS A Step Up.



Knudsen Oil & Feed
 Visit us for all your farm and acreage needs!

- Tank Wagon Service - Diesel, Gasoline, Propane
- Fertilizer, Seed & Feed
- Tires - Sales & Service - Farm, Auto, Lawn & Garden

402-427-7272 • 402-238-2413

Washington, Nebraska
 Loren Cohrs • Bob & Amy Harper



Lot #56

NP CATTLE CO.

NPC Miss Dawn Z29

ASA #2774616 Tattoo: Z29 BW: 78
 Birth Date: 1/21/12 1/2 SM 1/2 AN

TNT Dual Focus T249 { Mytty In Focus
 TNT Miss R77
 BLL Zeis Miss Macho U809 { 3C Macho M450 BZ
 G C F Miss Juanda R214

EPDs
 CE..... 9.9
 BW..... 1.2
 WW..... 63.4
 YW..... 97.1
 MCE..... 9.4
 MM..... 21.1
 MWW... 52.8
 API.... 119.5

This moderate, deep bodied female goes back to the Juanda R214 cow family. Her mating to Callaway heifer sexed should be very exciting. AI bred 4-4-13 to Callaway, heifer sexed.

Lot #57

NP CATTLE CO.

NPC Miss Image Z213

ASA #2774606 Tattoo: Z213 BW: 90
 Birth Date: 1/22/12 1/2 SM 1/4 AN 1/4 CS

TJ Sharper Image 809U { Dikemans Sure Bet
 T J Miss Bando S27
 NPC Miss T122 { CNS Dream On L186
 NPC Miss N102

EPDs
 CE..... 4.8
 BW..... 4.7
 WW..... 82.6
 YW.... 123.6
 MCE.... 10.9
 MM..... 19.3
 MWW.. 60.6
 API.... 104.5

We have had numerous compliments on this Sharper Image daughter all year long. Her long neck, sound structure, and yack hair will not disappoint. The heifer calf that she should have could be a great one. AI bred 3-28-13 to Welsh's Dew It Right, heifer sexed.



Lot #58

NP CATTLE CO.

NPC Miss Lucy Gal Z107

ASA #2774609 Tattoo: Z107 BW: 85
 Birth Date: 1/21/12 1/2 SM 7/16 AN 1/16 MA

Lot #59

NP CATTLE CO.

NPC Miss Lucky Gal Z84

ASA #2774613 Tattoo: Z84 BW: 90
 Birth Date: 1/24/12 1/2 SM 7/16 AN 1/16 MA

Maximus 391 { Meyer Ranch 734
 G720
 GCF Miss Lucky Gal N42 { GW Lucky One 686K
 4

EPDs
 CE..... 5.5
 BW..... 2.4
 WW..... 49.0
 YW..... 61.5
 MCE..... 2.9
 MM..... 18.6
 MWW.. 43.0
 API..... 93.3

These two heifers are maternal sisters to Lot #15 and flush mates to the heifer that Audrey Scheider showed this year. Audrey was 6th overall at Junior Nationals, won the Simmental Breeder's Sweepstakes, Reserve Grand Champion at the Ohio State Fair and Res. Champion at the Royal. This mating of Maximus x N42 has produced winner after winner. This might be the last chance you get to purchase a female from this mating.



*Z107 was AI bred 3-26-13 to Welsh's Dew It Right, heifer sexed.
 Z84 was AI bred 3-27-13 to Welsh's Dew It Right, heifer sexed.*

Above is the full sister to Lots 58 & 59. She was champion foundation female at the Sweepstakes and was purchased at last year's Genetic Perfection sale by the Phelps and Scheider families.



Lot #60
SCHRAM CATTLE CO.
Schram Lady Z10



No bull/pasture exposure!

ASA #2775415 Tattoo: Z10 BW: 86
 Birth Date: 1/27/12 1/2 SM 1/2 AN

SFI Super Star T45H { Ellingson Black Perfector
 SFI Advantage H145

526

EPDs	Mating EPDs
CE..... 5.7	CE.....7.00
BW..... 2.6	BW.....2.65
WW..... 57.4	WW.....65.45
YW..... 91.4	YW.....103.30
MCE..... 5.0	MCE.....7.20
MM..... 22.7	MM.....22.15
MWW.. 51.4	MWW.....54.90
API..... 92.3	API.....104.0

Excellent half blood female with a ton of muscle shape that's smooth made, long spined and sound structured. Bred to W/C Widetrack 694Y on 5/21/13.

Lot #61
ZEIS SIMMENTALS
Zeis Lookout Z792

ASA #2770960 Tattoo: Z792 BW: 77
 Birth Date: 1/30/12 1/2 SM 1/2 AN

B C Lookout 7024 { O C C Legend 616L
 Gibbet Hill Mignonne E37
 LF Annabelle { PVF-BF BF26 Black Joker
 AKF Heart Breaker 246H

EPDs

CE..... 7.1
BW..... 2.4
WW..... 61.3
YW..... 91.1
MCE..... 5.1
MM..... 22.5
MWW.. 53.1
API.... 102.8



WS A Step Up

I have appreciated the BC Lookout cattle for years for their balance, look and stoutness. With Lookout semen getting hard to find and expensive, I wish we had made a lot more of them. Here is your chance to buy a really nice one with her whole productive life ahead of her. AI bred 4-29 to WS A Step Up.

EPDs

CE..... 6.0
BW..... 1.8
WW..... 68.3
YW.... 110.4
MCE..... 6.2
MM..... 21.3
MWW.. 55.4
API..... 95.2

Lot #62
ZEIS SIMMENTALS
Zeis Fancy Z822

ASA #2770963 Tattoo: Z822 BW: 70
 Birth Date: 2/01/12 1/2 SM 1/2 AN

SC Mo Magic S47 { SVF/NJC Mo Better M217
 Akers Ruby 2184
 Zeis WCS Fancy X430 { S A V Peacemaker 3179
 WCS Ms Fancy 601S

Here is an angular sharp fronted female that has the look of a super mama cow. Big volume and easy on the eyes. The MoMagic bull has worked very well for us for several years. AI bred 3-26 to Welsh's Dew It Right, female sexed.



#63

Lot #63
ZEIS SIMMENTALS
Zeis Miss Zel Z882

ASA #2770958 Tattoo: Z882 BW: 68
 Birth Date: 2/6/12 1/2 SM 1/2 AN

Duff New Edition 6108 { O C C Genesis 872G
 O C C Dixie Erica 814G
 Zeis Miss Drive N443 { HC Power Drive 88H
 Zeis Miss Fortune J79

EPDs

CE..... 7.5
BW..... 1.6
WW..... 57.7
YW..... 86.6
MCE..... 1.1
MM..... 17.6
MWW.. 46.4
API..... 94.4

This right sized New Edition daughter impresses us with her sheer body mass, bone and foot size. The Zel cow family has been a mainstay for many breeding programs around the country and this one should be a future top producer. The mating to Callaway gets me excited. AI bred 4-11 to SS Mr Callaway, female sexed.



Lot #64
ZEIS SIMMENTALS
Z220

ASA #pending Tattoo: Z220 BW: 76
 Birth Date: 2/5/12 1/2 SM 1/2 AN

EPDs
 CE..... 16.5
 BW..... .35
 WW..... 62.0
 YW..... 96.0
 MCE..... 12.8
 MM..... 23.6
 MWW... 54.5
 API.... 140.0

Lot #65
ZEIS SIMMENTALS
222Z

ASA #pending Tattoo: 222Z BW: 78
 Birth Date: 2/15/12 1/2 SM 1/2 AN

S A V Brilliance 8077 { S A V Bismarck 5682
 { S A V Blackcap May 5270
 WCS Ms Fancy 601S { CNS Dream On L186
 { WCS Ren Ms Just Right 250M

A super attractive and complete pair of sisters sired by the breed leading Angus sire Brilliance. A full sib was our high selling bull last January. The Brilliance x Dream On cross excels in calving ease, growth and carcass traits. I guess you can have good looking cattle with good numbers. API 140.
2220-AI bred 3-30 to WLE Uno Mas.
222Z-AI bred 4-6 to Welsh's Dew It Right.



Lot #66
SCHRAM CATTLE CO.
Schram Queen Z29

ASA #2775417 Tattoo: Z29 BW: 68
 Birth Date: 2/24/12 1/2 SM 1/2 AN

3C Ten Fold { 3C Macho M450 BZ
 { BR Miss Arapahoe 253M

779



No bull/pasture exposure!

EPDs	Mating EPDs
CE..... 9.9	CE..... 11.70
BW..... -2.1	BW..... -0.40
WW..... 48.7	WW..... 57.45
YW..... 72.9	YW..... 83.30
MCE..... 9.8	MCE..... 10.80
MM..... 20.8	MM..... 20.30
MWW... 45.1	MWW..... 49.00
API.... 108.1	API..... 119.0

Out of a Lutton dam, solid black percentage female that has show heifer factory written all over her - big square hip, smooth from end to end with hair and bone! Bred to WS Pilgrim H182U on 5/18/13.



Lot #67
SCHRAM CATTLE CO.
Schram Bliss Z32

ASA #2775419 Tattoo: Z32 BW: 80
 Birth Date: 2/26/12 1/2 SM 1/2 AN

3C Ten Fold { 3C Macho M450 BZ
 { BR Miss Arapahoe 253M

57



No bull/pasture exposure!

EPDs	Mating EPDs
CE..... 7.6	CE..... 10.55
BW..... -0.1	BW..... 0.60
WW..... 52.7	WW..... 59.45
YW..... 78.5	YW..... 86.10
MCE..... 9.7	MCE..... 10.75
MM..... 19.2	MM..... 19.50
MWW... 45.5	MWW..... 49.20
API.... 98.1	API..... 114.0

One of our favorite females since she was a calf on pasture! Style, balance and stout from end to end. With a perfect blaze she'll be hard to miss on sale day! Bred to WS Pilgrim 694Y on 5/27/13.



Lot #68
TUCKER CATTLE CO.
B&R SIMMENTALS
B&R Miss Macho Z65

ASA #2775948 Tattoo: Z65 BW: 83
 Birth Date: 3/20/12 1/2 SM 1/2 AN

Lot #69
TUCKER CATTLE CO.
B&R SIMMENTALS
B&R Miss Wendy Z5

ASA #2652674 Tattoo: Z5 BW: 86
 Birth Date: 3/28/12 1/2 SM 1/2 AN

3C Macho M450 BZ { Meyer Ranch 734
 3C Crocus H112 B
 LCC Wendy MH378 { Rockn D Ambush 1531
 LCC Wendy K3032

EPDs
 CE..... 6.0
 BW..... 1.5
 WW..... 59.6
 YW..... 86.8
 MCE..... 11.2
 MM..... 20.3
 MWW.. 50.0
 API.... 110.3



No bull/pasture exposure!



A pair of sisters from the 378 donor. Feminine and angular in their overall make up these two come from a proven mating with full sisters retained in the herd. Again an opportunity to work through several planned mating scenarios with the uniqueness of their pedigrees.

Z65 was AI bred to I-80 on 7/3/13. Z5 was AI bred to I-80 on 5/8/13.

Lot #70
TUCKER CATTLE CO.
B&R SIMMENTALS
BT Miss Pride Z158

ASA #2775955 Tattoo: Z158 BW: 84
 Birth Date: 3/30/12 1/2 SM 1/2 AN

Lot #71
TUCKER CATTLE CO.
B&R SIMMENTALS
BT Miss Pride Z82

ASA #2775956 Tattoo: Z82 BW: 87
 Birth Date: 4/4/12 1/2 SM 1/2 AN

SVF/NJC Built Right N48 { CNS Dream On L186
 NJC Ebony Antoinette
 G G Pride 6137 { D H D Traveler 6807
 G G Pride

EPDs
 CE..... 12.3
 BW..... -0.1
 WW..... 46.8
 YW..... 72.5
 MCE..... 6.6
 MM..... 17.9
 MWW.. 41.3
 API.... 111.3

G G Pride 6137 was a tremendous Angus donor for us and these are the last of the line from this 6807 donor. These two Built Right daughters are the right kind of genetic base to work from to build up the Simmental lines or to work into a whole host of breeding scenarios. As a reminder to all the buyers, our bred heifers are guaranteed AI bred as they are not exposed to any pasture sires.

Z158 was AI bred to I-80 on 7/3/13.

Z82 was AI bred to I-80 on 5/8/13.



No bull/pasture exposure!



Lot #72

SCHRAM CATTLE CO.

Schram Cassidy Z51

ASA #2775944 Tattoo: Z51 BW: 84
Birth Date: 3/10/12 5/8 SM 3/8 AN

TJ Sharper Image 809U { Dikemans Sure Bet
T J Miss Bando S27
Barts Miss Dunk 171 { DSC Mr Dunk
Barts Miss Highness 71



No bull/pasture exposure!

EPDs	Mating EPDs
CE..... 5.7	CE..... 9.60
BW..... 2.8	BW..... 2.05
WW..... 69.0	WW..... 67.60
YW..... 102.2	YW..... 97.95
MCE..... 7.1	MCE..... 9.45
MM..... 23.4	MM..... 21.60
MWW..... 57.9	MWW..... 55.40
API..... 96.3	API..... 113.0

5/8 baldy female that's phenotypically correct! Long bodied, deep, smooth through her neck and shoulder and sound like a cat. Bred to WS Pilgrim H182U on 5/24/13.

Lot #73

ZEIS SIMMENTALS

Zeis Miss Zel Z232

ASA #2651754 Tattoo: Z232 BW: 75
Birth Date: 1/21/12 3/4 SM 1/4 AN

SS Mr Callaway { PVF-BF BF26 Black Joker
Zeis Miss Jesse G177
BF Miss Emblazon Drive 2 { O C C Emblazon 854E
Zeis Miss Drive N423

EPDs
CE..... 5.3
BW..... 2.9
WW..... 58.5
YW..... 82.4
MCE..... 3.4
MM..... 17.9
MWW..... 47.1
API..... 80.6

Here is a really sharp looking blaze Callaway daughter out of an own daughter of Emblazon back to the N423 donor cow. This one is an eye catcher out in the bred pen and I love her maternal pedigree. Dream On and Meyer free for mating flexibility. AI bred 4-7 to Welsh's Dew It Right. PE to GCC Total Recall son. Too close to call!



Lot #74

TUCKER CATTLE CO.

B&R SIMMENTALS

BT Miss Calypso Z494

ASA #2775942 Tattoo: Z494 BW: 82
Birth Date: 3/18/12 3/4 SM 1/4 AN



No bull/pasture exposure!

EPDs	Mating EPDs
CE..... 6.5	CE..... 10.00
BW..... 0.9	BW..... 1.10
WW..... 48.9	WW..... 57.55
YW..... 68.0	YW..... 80.85
MCE..... 8.5	MCE..... 10.15
MM..... 21.0	MM..... 20.40
MWW..... 45.5	MWW..... 49.20
API..... 94.9	API..... 115.0

Lot #75

TUCKER CATTLE CO.

B&R SIMMENTALS

BT Miss Calypso Z152

ASA #2775943 Tattoo: Z152 BW: 86
Birth Date: 3/28/12 3/4 SM 1/4 AN

Westfall Voyager 721P { SVJ Power Surge
Drake Summer Sister
BT Miss Meyer U440 { Meyer Ranch 734
Vermillion Erica 8906

EPDs	Mating EPDs
CE..... 6.5	CE..... 7.40
BW..... 0.9	BW..... 1.80
WW..... 48.9	WW..... 61.20
YW..... 68.0	YW..... 91.60
MCE..... 8.5	MCE..... 8.95
MM..... 21.0	MM..... 21.30
MWW..... 45.5	MWW..... 51.95
API..... 94.9	API..... 109.0



The Voyager daughters out of the 440 donor have sold all over the US. Last fall a full sib was at the top of the high seller list in the NAILE sale at Louisville, KY. Last fall we had two open heifers in the sale which went on to success for their new owners but more importantly are going to make highly productive females. Now we are offering up their younger sisters. Z494 was AI bred to Pilgrim on 5/8/13. Z152 was AI bred to W/C Wide Track 695Y on 5/8/13.

Lot #76

**TUCKER CATTLE CO.
B&R SIMMENTALS**

Miss Maid Right Z176

ASA #2652687 Tattoo: Z176 BW: 89
Birth Date: 3/1/12 3/4 SM 1/4 AN



EPDs	Mating EPDs
CE..... 10.0	CE.....8.40
BW..... 2.1	BW.....3.05
WW..... 59.9	WW.....65.35
YW..... 83.7	YW.....95.15
MCE..... 6.6	MCE.....8.60
MM..... 22.2	MM.....20.85
MWW.. 52.2	MWW.....53.05
API.... 103.8	API.....97.0



Lot #77

**TUCKER CATTLE CO.
B&R SIMMENTALS**

Miss Maid Right Z54

ASA #2775947 Tattoo: Z54 BW: 82
Birth Date: 3/18/12 3/4 SM 1/4 AN

EPDs	Mating EPDs
CE..... 10.0	CE.....11.80
BW..... 2.1	BW.....1.70
WW..... 59.9	WW.....63.10
YW..... 83.7	YW.....88.70
MCE..... 6.6	MCE.....9.20
MM..... 22.2	MM.....21.05
MWW.. 52.2	MWW.....52.60
API.... 103.8	API.....119.0



Lot #78

**TUCKER CATTLE CO.
B&R SIMMENTALS**

Miss Maid Right Z876

ASA #2652686 Tattoo: Z876 BW: 87
Birth Date: 2/15/12 3/4 SM 1/4 AN

EPDs	Mating EPDs
CE..... 10.0	CE.....8.40
BW..... 2.1	BW.....3.05
WW..... 59.9	WW.....64.35
YW..... 83.7	YW.....95.15
MCE..... 6.6	MCE.....8.60
MM..... 22.2	MM.....20.85
MWW.. 52.2	MWW.....53.05
API.... 103.8	API.....97.0

SVF/NJC Built Right N48 { CNS Dream On L186
 { NJC Ebony Antoinette
BS Miss 8161P { 3C Boomer K189 B-W
 { 8161



Built Right has consistently worked well on the 8161 donor. A sister to these went through this sale as an open and now serves as a donor for a very satisfied customer in California with the first set of calves coming in the spring. We hope you appreciate the real world genetics we have amassed to go to work in your real world situations.

Z176 was AI bred to Broker on 5/8/13.
Z54 was AI bred to Pilgrim on 5/8/13.
Z876 was AI bred to Broker on 7/3/13.



Broker



Lot #79

**TUCKER CATTLE CO.
B&R SIMMENTALS**

Miss Dream Girl Z424

ASA #2652684 Tattoo: Z424 BW: 87
Birth Date: 3/22/12 3/4 SM 1/4 AN



WAGR Dream Catcher 03R { CNS Dream On L186
 { 3C Melody M668 BZ
BS Miss 8161P { 3C Boomer K189 B-W
 { 8161

EPDs	Mating EPDs
CE..... 9.0	CE.....7.90
BW..... 2.1	BW.....3.05
WW..... 58.8	WW.....63.80
YW..... 77.0	YW.....91.80
MCE..... 9.7	MCE.....10.15
MM..... 23.7	MM.....21.60
MWW.. 53.1	MWW.....53.5
API.... 115.6	API.....102.0

The Dream Catcher x 8161 mating has produced some tremendous females over the last couple of years and this year there are 3 in the sale. Stemming back to the 8161 donor, this Dream Catcher is one we really like and we feel

she will be a very good breeding piece. Moderate in her make up, easy doing on the feed bill with a lot of structural integrity describe the things one can appreciate about her. AI bred on 5/8/13 to Broker.



Lot #80
TUCKER CATTLE CO.
B&R SIMMENTALS
BT Miss Maiden Z440
 ASA #2652670 Tattoo: Z440 BW: 84
 Birth Date: 3/18/12 3/4 SM 1/4 AN



Lot #81
NATHAN FILIPI
BT Miss Maiden Z121
 ASA #2652669 Tattoo: Z121 BW: 79
 Birth Date: 3/25/12 3/4 SM 1/4 AN



No bull/pasture exposure!

SVF/NJC Built Right N48 { CNS Dream On L186
 { NJC Ebony Antoinette
 BT Miss Macho U53 { 3C Macho M450 BZ
 { B/R Magnet 7111

EPDs	Mating EPDs
CE..... 8.9	CE.....11.20
BW..... 2.3	BW.....1.80
WW..... 61.0	WW.....63.60
YW..... 89.3	YW.....91.50
MCE..... 8.2	MCE.....10.00
MM..... 23.6	MM.....21.70
MWW.. 54.1	MWW.....53.50
API.... 108.8	API.....117.0

One never knows for sure which female is going to make it to the donor pen moreover be the one who can produce marketable progeny when mated to multiple sires. What we do know is those kinds of females are few and far between so we all try to make the right decisions about genetics based upon the priorities for our respective programs. In the cattle business, as with any business, you want to minimize as much risk as possible while still taking enough of a risk so you can get maximum return on your investment. With that said, we are offering up a pair of very high quality, loose structured, donor potential bred heifers out of one of our upcoming young donors and a sire that is standing the test of time.

Z440 was AI bred to Pilgrim on 5/8/13.
 Z121 was AI bred to Pilgrim on 7/3/13.

Lot #82
ZEIS SIMMENTALS
Zeis Perfection Z612

ASA #2770964 Tattoo: Z612 BW: 94
 Birth Date: 1/24/12 PB SM

Harkers/JS Domination { STF Dominance T171
 { GCF Miss Caliente
 Zeis Perfection S116 { CNS Dream On L186
 { SS Miss Break

EPDs
CE..... 5.1
BW..... 6.1
WW..... 56.0
YW..... 73.8
MCE..... 6.8
MM..... 16.2
MWW.. 44.2
API.... 95.5



Zeis Perfection S116 - Dam

Here is a big volume, powered up purebred Domination daughter of the S116 donor cow that hailed from Lee Simmentals of MO. Nice purebred female here. She is well suited for matings to the popular Angus bulls.

AI bred 4-3 to SAV Brilliance.

PE to GCC Total Recall son. Too close to call!!



SAV Brilliance



Lot #83

LAAKER LAND & CATTLE

BLL Miss MF N423 Z652

ASA #2771858 Tattoo: Z652 BW: 80

Birth Date: 1/26/12 PB SM

LMF Movin Forward { Triple C Invasion R47K
LMF Godivas Beauty Stroke
Zeis Miss Drive N423 { HC Power Drive 88H
Zeis Miss Fortune J79

EPDs

CE..... 4.0
BW..... 3.0
WW..... 61.2
YW..... 93.5
MCE..... 7.8
MM..... 22.6
MWW... 53.2
API.... 116.4

A purebred N423 daughter that is moderate framed and powerful in her design. Her donor dam has been a consistent producer of money making cattle for Bill Fulton, then Pine Ridge of GA and now Jay Anderson of NE. Her Legacy free pedigree will afford a lot of different mating options and I really like her mating to Brilliance. AI bred 4-4 to SAV Brilliance.



COMMERCIAL BREDS

Lot #84

SCHRAM CATTLE CO.

Z16

Birth Date: 2/05/12

SIRE: One In A Million

DAM: Sim/Ang

Maybe the best composite female we've ever offered in the sale. Stout, sound, hairy and balanced. All added up in a red package.

Bred to Ali on 5/13/13.



No bull/pasture exposure!



Lot #85

TUCKER CATTLE CO.

B&R SIMMENTALS

BBR Zelma 272Z

Birth Date: 2/24/12

SIRE: BBR Rumor Mill (Mercedes Benz x CGMC Sedwicks Erica 5T)

DAM: BOE Kassi 902W (Open Bar x Unregistered)

Zelma is a really complete daughter of the up and coming Blind Badger Ranch Senior Sire - Rumor Mill who traces back to Ali on the top side and Irish Whiskey on the bottom side. Zelma is a smooth fronted, long spined female with plenty of power.

AI Bred to I-80 on 5/8/13.



No bull/pasture exposure!



I-80



Lot #86
TUCKER CATTLE CO.
B&R SIMMENTALS
Z1

Birth Date: 3/10/12

SIRE: Monopoly

DAM: 8161P x Gold Club

A powerfully constructed commercial female with the potential to be a top end prospect producing machine. Again, on these bred heifers make note they are guaranteed to the AI sire when the no bull sign is beside the lot. AI Bred to I-80 on 5/8/13.



No bull/pasture exposure!

Lot #87
TUCKER CATTLE CO.
B&R SIMMENTALS
Z85

Birth Date: 3/10/12

SIRE: Headliner

DAM: Platinum x Meyer

A fancy made Headliner daughter who is made a little extra wide in her skeletal composition which allows her to exhibit a tremendous amount of rib shape in a complete moderate package.

Bred to the calving ease I-80 on 8/10/13.



No bull/pasture exposure!



Lot #88
TUCKER CATTLE CO.
B&R SIMMENTALS
Z217

Birth Date: 3/15/12

SIRE: Bodacious

DAM: Commercial Angus

Hallmark club calf genetics in this bred heifer. With her overall angularity and eye appeal this female could be the one to raise the next show steer or heifer. AI Bred to I-80 on 7/3/13.



No bull/pasture exposure!

QUITE POSSIBLY THE BEST HYBRIDS YOU CAN BUY.

LYNN JUSTESEN, District Sales Manager, 402-540-4757
 Visit Wyffels.com for Wyffels performance results.

WYFFELS HYBRIDS
More than a number™



I-80

Lot #89
TUCKER CATTLE CO.
B&R SIMMENTALS
Z45

Birth Date: 3/20/12



No bull/pasture exposure!

SIRE: DOC

DAM: Heat Wave

With her sleek front, overall mass and stoutness you would expect this one to go on and be a prospect producing machine. Mated up early to the calving ease specialist I-80 on 5/8/13.

Lot #90
SCHRAM CATTLE CO.
Z82

Birth Date: 4/24/12

SIRE: Hide-N-Watch son

DAM: Sim/Ang

Stout, sound, solid black clubby cow power!

Bred to I-80's full brother on 5/23/13.



No bull/pasture exposure!



#90



SEMEN

Lot #91
LAAKER LAND & CATTLE

3 units 5 ml female sexed GF Maximus

Some of very last 5ml Maximus semen in existence. This semen always flushed very well for us.

News Flash



Bull & Stallion Semen Freezing

Frozen Semen Storage

& Shipping

On-Farm Bull Semen Testing

Stallion Cooled Collection—

Mare Breeding

Sexed Bull Semen in conjunction

with Sexing Technologies

Current updates on Face Book

Ashland, NE—402-944-2584

voglersemen.com

BIDDING AND APPLICABLE LAW:

All cattle listed in this offering comply with prevailing sale terms and conditions as set forth by the laws of the state wherein the sale is conducted. There are no warranties, expressed or implied, by either the auctioneer or consignor, except as set forth herein, as to the merchantability of fitness for any particular purpose of any animal offered in this sale. The right to bid or the right to reject the final bid, if done before the hammer falls, is reserved for all sellers unless otherwise announced from the sale block or as prohibited by law in the state wherein the sale is being conducted.

ANNOUNCEMENTS:

Any change of information other than that listed in the catalog will be announced from the auction block and such announcements shall take precedence over printed material. All statements made from the auction block or those made by the seller (in private treaty) must be documented by seller if requested by the buyer at time of sale.

TERMS:

Terms of sale are cash unless satisfactory credit arrangements have been made with the seller prior to the sale of any animal so affected. Interest will be charged to any buyer who has not settled by Dec. 20, 2013, and must be re-billed at that time.

AUCTION ATTENDANCE:

All attendees, registered to bid or otherwise, attend the auction at their own risk. The Genetic Perfection group in its entirety or individual consignors and sales staff are in no way liable for any accident that may occur while attending this auction.

PURCHASER'S RISK:

Each animal becomes the property of and therefore is also the risk of the purchaser as soon as it is sold; except it shall be the obligation of the seller to see that animals are fed and cared for free of charge to purchaser, until loaded for shipment or until the expiration of twenty-four (24) hours after the sale, whichever occurs first.

HEALTH REQUIREMENTS:

1. All cattle entered for sale must meet the health regulations of the state in which they are sold. All other agreements regarding the health of the animal will be between the buyer and the seller and should be documented in writing.
2. If sale cattle are returned to the seller for an adjustment, they must meet the health requirements of the state they are returned to.

CERTIFICATE OF REGISTRY:

Each animal which is catalogued, offered and sold as a registered animal shall have a certificate of registry available at time of sale. When an animal is sold as "eligible for registry" or "registry applied for," the seller shall be responsible for obtaining the certificate of registry and for the proper transfer of the certificate to the purchaser including full payment of transfer fees.

IDENTIFICATION:

Each animal at time of sale must have a readable tattoo or brand corresponding to that shown on the certificate of registration.

AUTHENTICITY OF PEDIGREE:

When an animal, through blood-typing, is determined to have an ancestry other than that reported on the registration certificate, the buyer shall be entitled to a refund of the purchase price from the seller upon the return of the animal to the farm of the seller at the seller's expense. The animal in question, at the buyers option, may be exchanged for another animal of equal value, or if agreeable with the buyer, the seller may have the certificate of registry corrected at the seller's expense with the corrected certificate returned to the buyer. Any adjustment provided herein, if selected, shall also absolve the seller from further liability for authenticity of pedigree to the buyer.

BREEDING GUARANTEES AND DEFINITIONS:

1. Females are guaranteed to be breeders, with the exception of:
 - a) Female calves sold at side of dam
 - b) Injury or disease occurring after time of sale
 - c) Gross negligence or willful misconduct on the part of the purchaser
 - d) Females used in ovum transplant after time of sale
 - e) Females shown competitively after time of sale
 - f) Cows sold with calf at side or a female that calves after sale to a breeding prior to the date of sale
2. Bulls are guaranteed to be breeders (defined as the ability to settle healthy cows by the time the bull is 18 months of age) with the exception of:
 - a) Bull calves sold at side of dam
 - b) Injury or disease occurring after time of sale
 - c) Gross negligence or willful misconduct on the part of the purchaser
 - d) Bulls shown competitively after time of sale
3. Any guarantees with respect to the ability to freeze semen shall be made by separate agreement between the buyer and seller.
4. Safe in calf females are females that have been diagnosed as pregnant by a veterinarian, and are bred at the time of sale. Purchaser may have a qualified veterinarian complete a pregnancy check within 2 weeks of purchase/sale. Any female that loses their calf after 2 weeks following purchase from this sale, and according to other terms of sale, shall not be awarded a refund to purchaser.
5. A bred female is a female known to have been serviced by a bull either by natural breeding or artificial insemination, but it does not necessarily mean that the female is safe in calf to that service.
6. A pasture-bred female is a female that has been pastured with a designated bull and has been exposed for the time stated, but it does not necessarily mean that this is safe in calf to that bull.

7. An open heifer is a virgin heifer that has never been exposed to a bull either through natural service or artificial insemination.
8. An open cow is a cow that has not been exposed to a bull either through natural service or artificial insemination since the birth of her last calf.
9. Calves sold off their dams (split pairs) shall carry the full breeding guarantee.

PRIVILEGE OF PURCHASER TO EXAMINE:

The purchaser of a female animal may have her examined within twenty-four (24) hours after the fall of the hammer and prior to removal from sale premises. The pregnancy status or breeding status of any female so examined, when found not to be as represented at the time of the sale, is cause for the female to be returned to the seller as unsold.

EMBRYO TRANSFER:

1. Seller should provide upon request a complete history of embryo transfer activity for any female offered for sale.
2. Withholding information on the existence of frozen embryos at the time of sale would be considered an unethical practice.

OPTIONS AND PRIVILEGES OF RETURN OR ADJUSTMENT:

The following adjustments do not preclude the right of the buyer and seller to mutually agree upon other terms and conditions for settlement of any dispute.

1. All claims for adjustment or refund must be made in writing either within six (6) months from the date of sale or no later than when the animal reaches 24 months of age, whichever occurs later, with the exception of claims involving the misrepresentation of service sire or as otherwise provided herein.
2. In the event an animal is claimed to be a nonbreeder, the animal may be returned to the farm of the seller, at the buyers expense, if in good physical condition, and the return is in compliance with the health requirements of the seller's state. The seller shall be entitled to a six (6) month trial period following the return of the animal in which to prove that the animal is a breeder. If at the end of six (6) months the seller is unable to prove the animal is a breeder the seller shall, at the option of the buyer, replace the animal with another of equal value or refund the purchase price. Either option shall be deemed full satisfaction and settlement.
3. If a female is sold as "safe in calf" to a given sire or with calf on a specific date or dates and proves not to be as represented, the buyer is entitled to a refund of the purchase price from the seller upon the return of the animal and resulting progeny thereof to the seller at the seller's expense. In order to qualify for a full refund the buyer must follow point number 4 under breeding guarantees and definitions.
4. If the female is sold as "open" and proves to be with calf at the time of sale and examined pregnant within sixty (60) days after the sale, the buyer may return the animal to the farm of the seller prior to calving for refund of the full purchase price or for another animal of equal value, whichever is acceptable to the buyer. It shall be the obligation of the seller to bear any expenses incurred for transportation of the animal in question to the farm of the seller.

LIMITATIONS OF OBLIGATIONS:

1. If the aforementioned suggested terms and conditions are adopted, they should constitute a contract between the buyer and the seller for each animal sold under these terms, and as such, should be binding upon both parties. Animals resold following purchase in a sale shall constitute a separate transaction and the privileges and obligations of the original two parties connected thereto are not covered by the terms and conditions of the sale.
2. The American Simmental Association, its directors or employees are not in any way responsible or liable for enforcing the suggested terms and conditions of any agreements involving transactions between buyers and sellers.

SEXED HEIFER SEMEN:

Sexed semen is not 100% accurate, therefore the Genetic Perfection sale group cannot guarantee the gender of resulting calves.

PREGNANCY RECIPIENTS:

In the case of already realized pregnancies (i.e. embryos that have been implanted and confirmed pregnant) the buyer will pay 100% of the purchase sale day. Each of these recipient females has been examined for pregnancy by a qualified technician and is fully guaranteed to be carrying the mating described with each lot. These cattle will sell without further guarantee. In the case of unrealized pregnancies, the seller will provide the buyer with a pregnant recipient female that is fully guaranteed to be carrying the mating described in its respective lot on or about the time agreed upon by the buyer and seller. Buyer must take delivery of and make full settlement for their pregnancy purchase within 30 days of confirmation of the pregnancy and notification by the seller. No guarantee, expressed or implied, is made as to a live calf, calf quality, or recipient value. In all cases, transportation will be the responsibility of the buyer in cooperation with the seller.

EMBRYOS:

Unless described or announced differently, all embryos are Grade #1s and are fully guaranteed to consist of their respective mating described herein. Due to the nature of this event and the wide range and geographical locations of the buyers and sellers involved, no guarantee can be made as to conception rate realized when using these embryos. However, if the buyer uses an embryo technician that is agreed upon by the seller and the buyer informs the seller of his intentions prior to implanting the embryos, at least one **90 day** pregnancy will be guaranteed per three embryos sold. No guarantee, expressed or implied, is made as to a live calf, or calf quality. However, in all cases, the buyer will be responsible for all shipping arrangements and expenses.

FLUSHES/EMBRYOS TO THE BULL OF BUYER'S CHOICE:

All flushes/embryos to the bull of the buyer's choice will be sold per the terms of the footnote per the respective lot they are sold as.

Any cattle selling that have Yellow Trait Trac status are guaranteed to be clean of all known genetic defects.



Rounding up our best genetics!



6505 County Road 23
Kennard, NE 68034

**FIRST CLASS MAIL:
TIME DATED MATERIAL!**

PRESORTED
FIRST CLASS MAIL
U.S. POSTAGE PAID
ABPC

RETURN SERVICE REQUESTED

TO:

*PLEASE BRING
THIS CATALOG
TO THE SALE!*

This sale will be broadcast live on the internet.

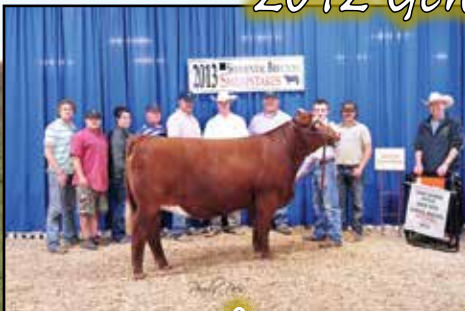
DVAuction
Broadcasting Real-Time Auctions



*SATURDAY,
NOVEMBER 30, 2013*

*Fremont, Nebraska
Christensen Field - 1:00 P.M.*

2012 Genetic Perfection Purchases:



Where Champions Are Born!